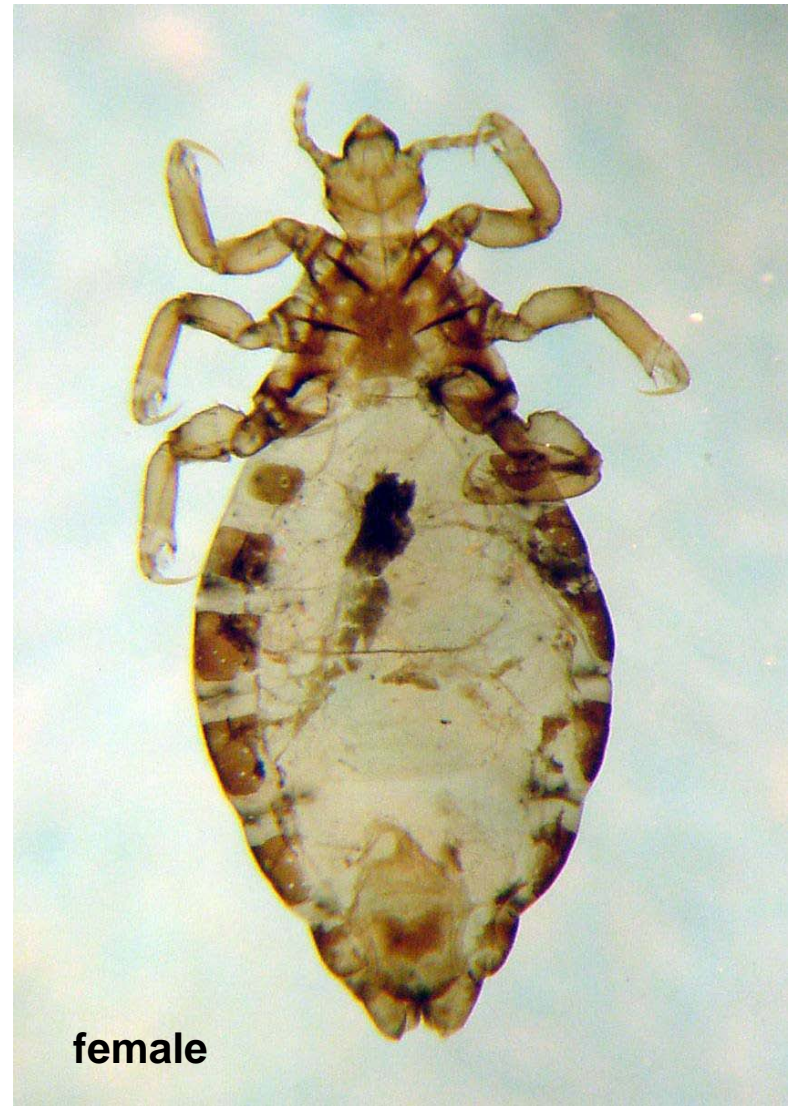
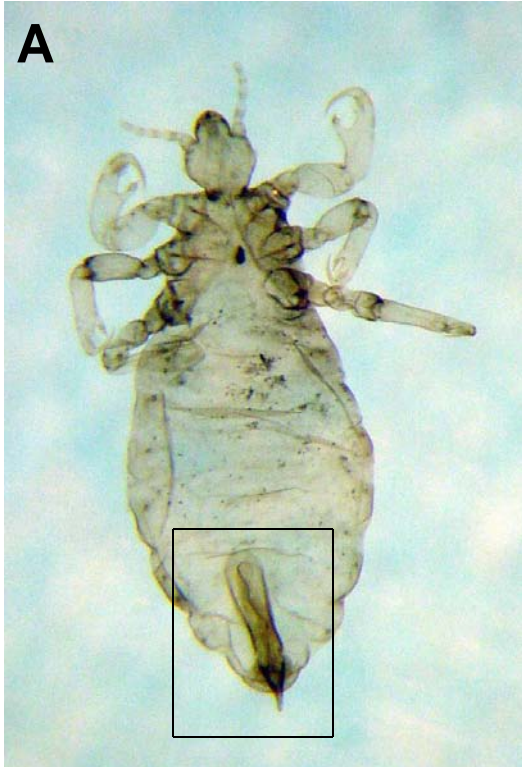


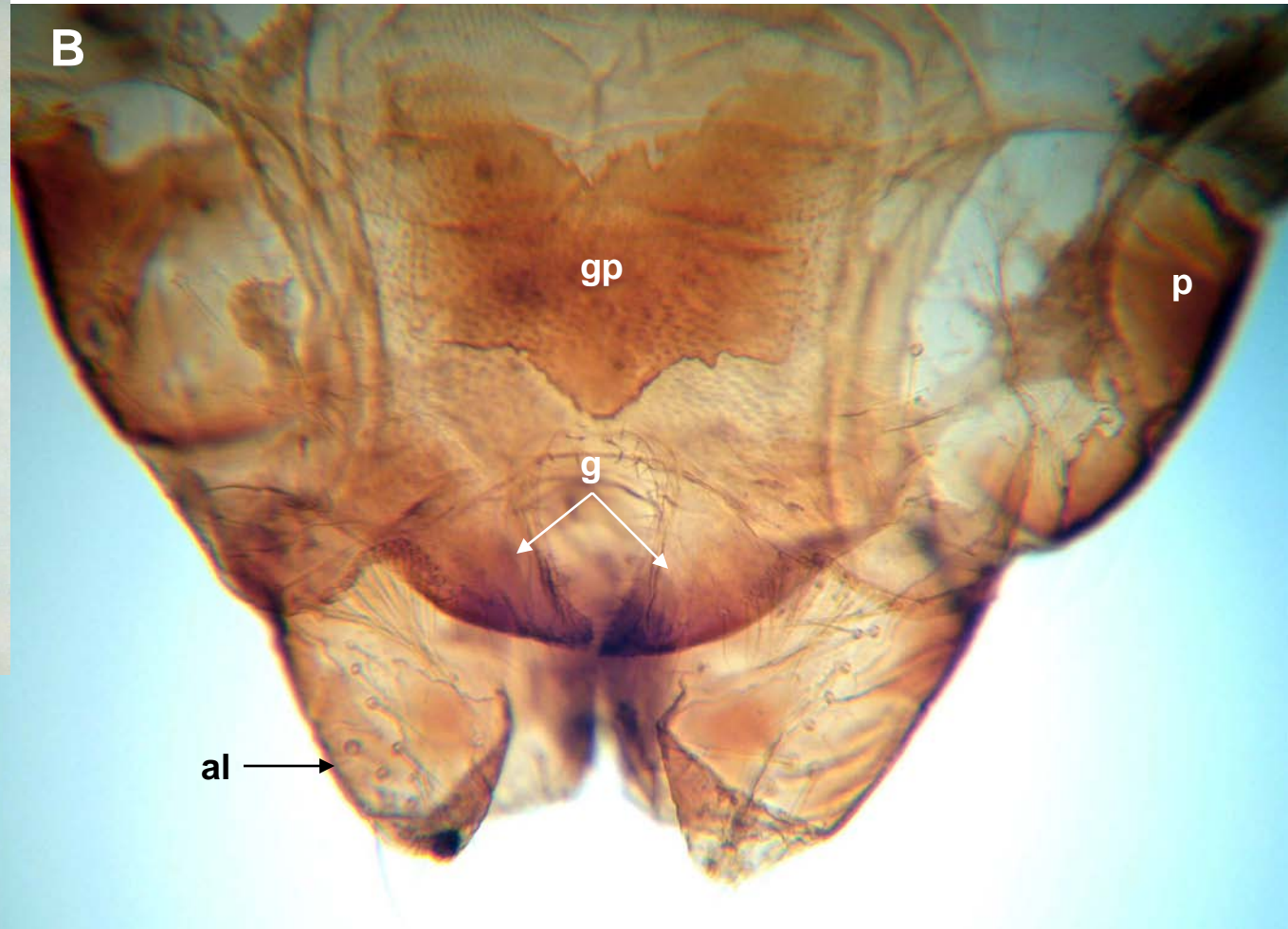
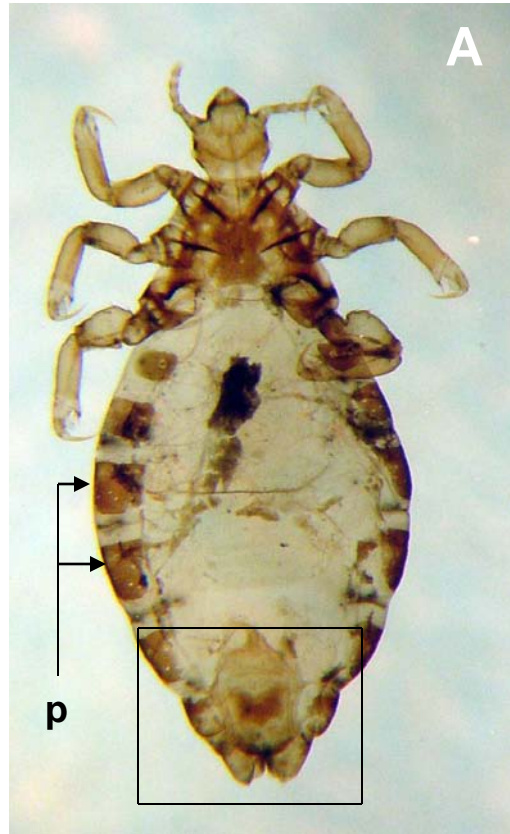
*Pediculus humanus*. Note sexually dimorphic characters; a blunt posterior in the male, bifurcated posterior in the female.



*P. humanus*, male  
(copulatory apparatus).  
Box in A enlarged in B.



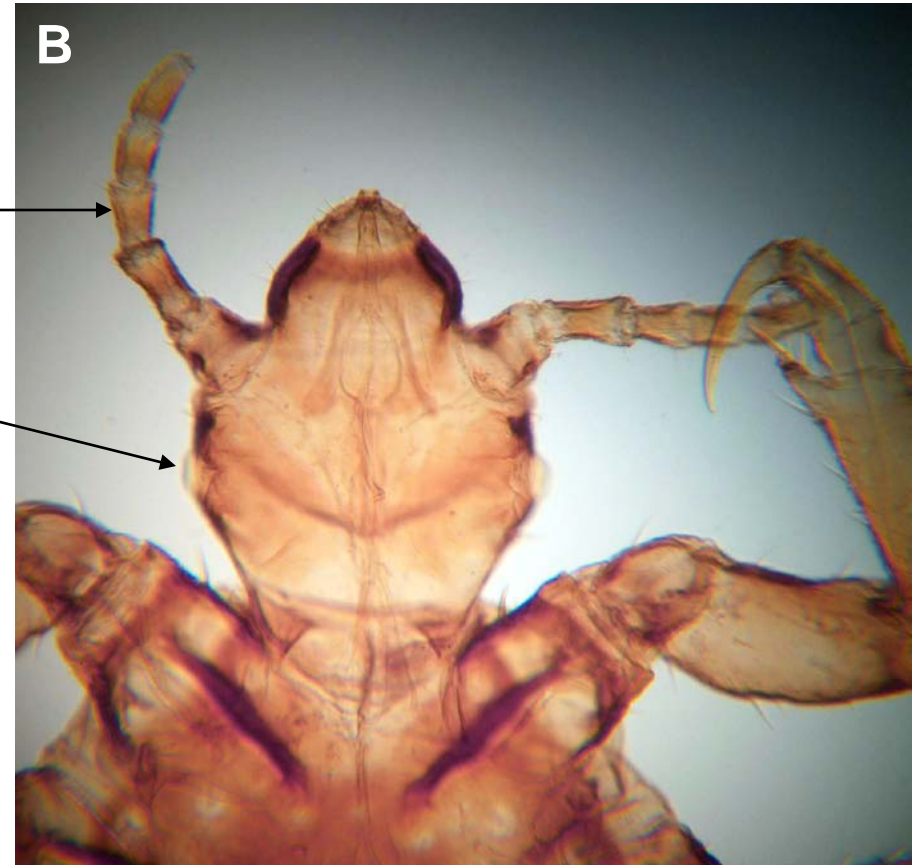
*P. humanus*, female. Box in A enlarged in B.  
Legend: al, apical lobe; g, gonopods; gp, genital plate;  
p, paratergal plates.



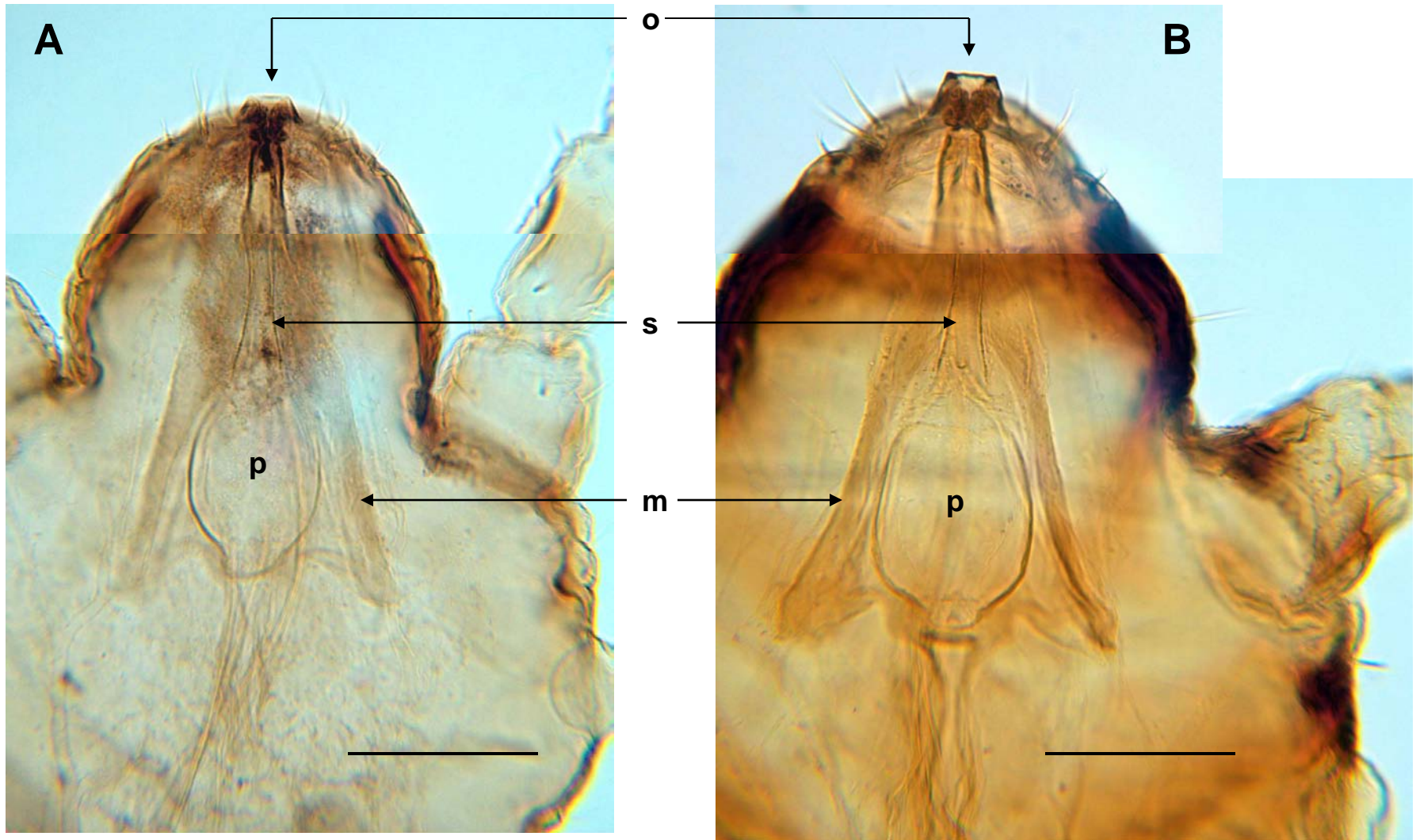
*P. humanus*: claw of 1<sup>st</sup> leg; male (left) female (right). Note serrations (arrow) on male, absent in female.



*P. humanus*. Head of male (A); female (B).  
Legend: a, antenna; e, eye.



*P. humanus* mouth parts: male (A); female (B). Legend (terms tentative):  
m, muscle; o, oral opening; p, pharynx; s, stylet. Scale bars = 100  $\mu$ m.



*P. humanus*: paratergal plates (A); sternal plate (B).  
Legend: s, spiracle; t, trachea.

